



**No. 677**  
Sea maple-effect

40 mm



**No. 111**  
Light oak effect

25 mm 40 mm



**No. 653**  
vintage oak-effect

40 mm



**No. 673**  
Havana oak effect

40 mm



**No. 688**  
Oregon oak effect

40 mm



**No. 148**  
Jupiter sand  
Only available in PLS finish.

25 mm 40 mm NEU



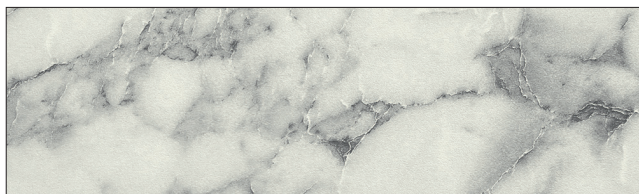
**No. 117**  
Hulton oak effect  
Large-scale finish with marked differences in colour.

40 mm



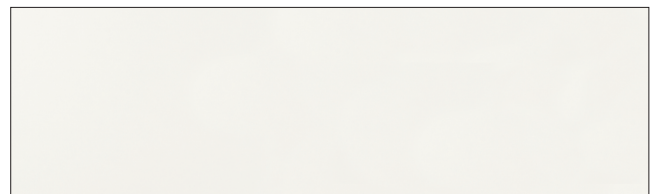
**No. 128**  
Wild west  
Large-scale finish with marked differences in colour.

40 mm



**No. 151**  
Marble white  
Only available in PLS finish.

25 mm 40 mm NEU



**No. 619**  
White

25 mm 40 mm



**No. 669**  
graphite

40 mm



**No. 683**  
Concrete-effect, slate light grey

25 mm 40 mm

Note that the finishes are offset and not continuous where worktops and edges join together.  
The illustrations show only a section of the overall finish. For technical reasons, colours and structures may differ from the originals.



**No. 674**

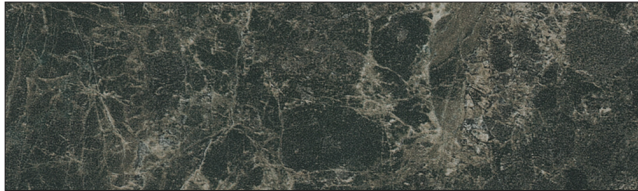
Concrete effect, natural

40 mm

**No. 684**

Concrete-effect, slate dark grey

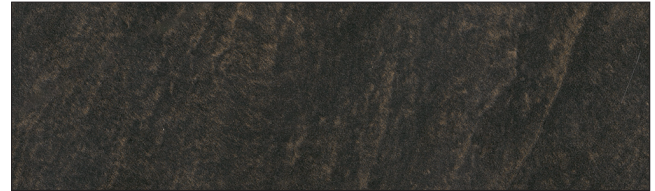
25 mm 40 mm

**No. 147**

Marble green

Large-scale finish with marked differences in colour. Only available in PLS finish.

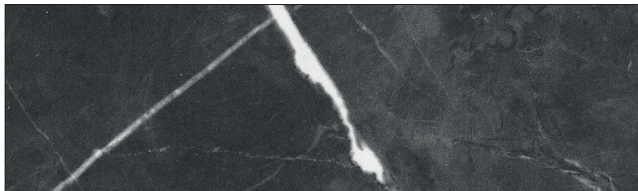
25 mm 40 mm NEU

**No. 149**

Slate texture copper

Only available in PLS finish.

25 mm 40 mm NEU

**No. 685**

Carrara black

Large-scale finish with marked differences in colour.

40 mm

**No. 127**

Wild maple effect, alpine

Large-scale finish with marked differences in colour.

40 mm

**No. 146**

Slate texture black

Only available in PLS finish.

25 mm 40 mm NEU

**No. 131**

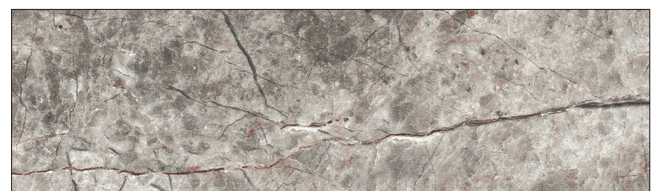
Stone structure, green

40 mm

**No. 648**

lava grey, stone structure

25 mm 40 mm

**No. 129**

Terrazzo, lapis grey

Large-scale finish with marked differences in colour.

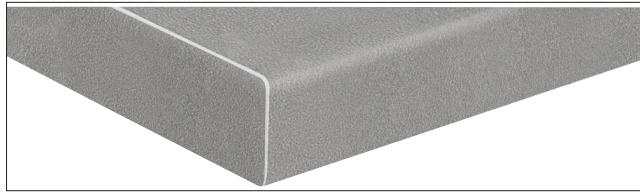
40 mm

Note that the finishes are offset and not continuous where worktops and edges join together. The illustrations show only a section of the overall finish. For technical reasons, colours and structures may differ from the originals.

## Worktop edge finishes

Note that the finishes are offset and not continuous where worktops and edges join together.

The illustrations show only a section of the overall finish. For technical reasons, colours and structures may differ from the originals.

**PLR**

Worktop 40 mm thick, with rounded front edge, both front edges with edging in same colour as worktop surface.

**PLS**

Panel approx. 25 / 40 mm thick, with a straight front edge, both leading edges with edging strip in the same colour as the worktop surface